

SW-5054R

5x3 Multi-Format Presentation Switcher with HDMI, HDBaseT-Lite Outputs & Recorder

User Manual

TABLE OF CONTENTS

INTRODUCTION	2
FEATURES	2
PACKAGE CONTENTS.....	2
SPECIFICATIONS.....	3
PANEL DESCRIPTIONS	4
CONNECTION DIAGRAM	6
OPERATION APPROACH.....	7
WARRANTY	9



rev: 200713
Made in Taiwan

INTRODUCTION

The **SW-5054R 5x3 Multi-Format Presentation Switcher with HDMI, HDBaseT-Lite Outputs & Recorder** is a multi-in-one presentation switch with HDBaseT extender and video recorder functions into one compact device. With five multi-format inputs to two HDMI and one HDBaseT outputs, SW-5054R is well suited for use in digital signage, conference room presentation systems or other similar settings or applications. Besides, user can record video of the device connected to the SW-5054R and the voice from the built-in/external microphone to the USB flash drive or SD card.

FEATURES

- Supports multiple video format inputs: 3x HDMI 2.0a, 1x DP1.2, 1x Type C
- Supports HDMI & HDBaseT-Lite outputs
- Input resolution supports up to 4K2K@60 4:4:4 8bits
- Output resolution supports:
 - HDMI output: up to 4K2K@60Hz (4:4:4 8bits)
 - HDBaseT-Lite output: up to 4K2K@60(4:2:0)
- HDBaseT feature supports:
 - Extend the transmission up to 70m (230ft) from the HDMI source at Full HD 1080p 36-bit and 40m (131ft) at 4K2K@60(4:2:0)
- HDCP 2.2 and 1.4 compliant
- Video bandwidth: 18Gbps
- Supports to record video & voice to the USB flash drive or SD card
- Supports built-in & external microphone
- Supports xvYCC, x.v.Color & Deep color
- The switcher can select any inputs by push button control
- Front Panel LED indicators
- Easy installation



• SW-5054R does NOT support 4K2K@60 4:2:2 10bits, so please turn off the 24Hz setting for playing Blue-rays with Xbox.

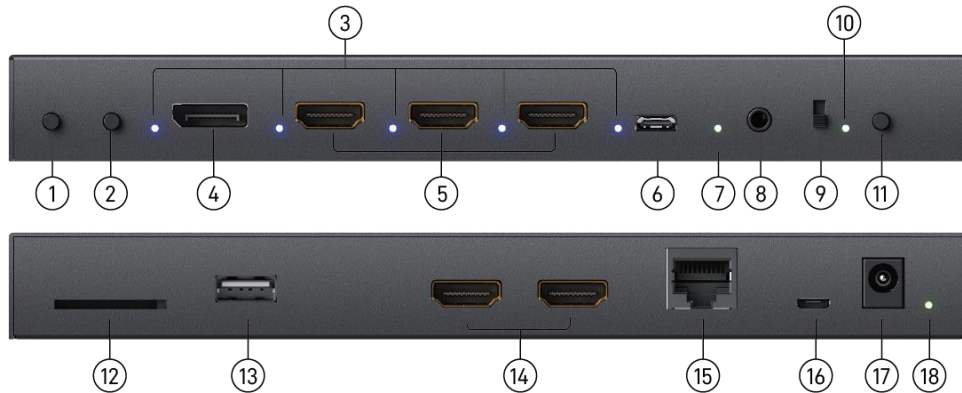
PACKAGE CONTENTS

- 1x SW-5054R
- 1x 5V DC power adapter
- 1x User Manual

SPECIFICATIONS

Model Name		SW-5054R
Technical		
Role of usage		Multi-Format Presentation Switcher
HDMI compliance		HDMI 2.0a
HDCP compliance		1.4 / 2.2
Video bandwidth		Single-link 600MHz [18Gbps]
Output Video Support		HDMI output: Up to 4K2K@60 (4:4:4 8bits) HDBaseT output: Up to 4K2K@60(4:2:0)
Input Video Support		Up to 4K2K@60 (4:4:4 8bits)
Audio Support		DTS-HD Master Audio, Dolby TrueHD Dolby Digital DTS, DVD-Audio, LPCM, SACD, MPCM (Recorder only supports PCM & LPCM)
Control		Push button Control
Input TMDS Signal		1.2 volts (peak-to-peak)
Input DDC signal		5 volts (peak-to-peak)
ESD Protection		Human body model—±15kV [air-gap discharge] & ±8kV [contact discharge]
Input		3x HDMI + 1x DP + 1x Type C + 1x 3.5mm
Output		2x HDMI + 1x RJ-45[HDBT] + 1x USB + 1x SD Card
HDMI connector		Type A [19-pin female]
DP connector		Normal Type
USB connector		Type A / Type C / Micro USB
Mechanical		
Housing		Metal enclosure
Dimensions [L x W x H]	Model	210 x 122 x 23mm[8.3" x 4.8" x 0.9"]
	Package	371 x 170 x 77mm[1'5" x 6.7" x 3"]
	Carton	410 x 368 x 393mm[1'3" x 1'4" x 1'5"]
Weight	Model	635g[1.4 lbs]
	Package	1035g[2.3 lbs]
Fixedness		Wall-mounting case
Power supply		5V DC
Power consumption		3 Watts [max]
Operation temperature		0~40°C [32~104°F]
Storage temperature		-20~60°C [-4~140°F]
Relative humidity		20~90% RH [no condensation]

PANEL DESCRIPTIONS



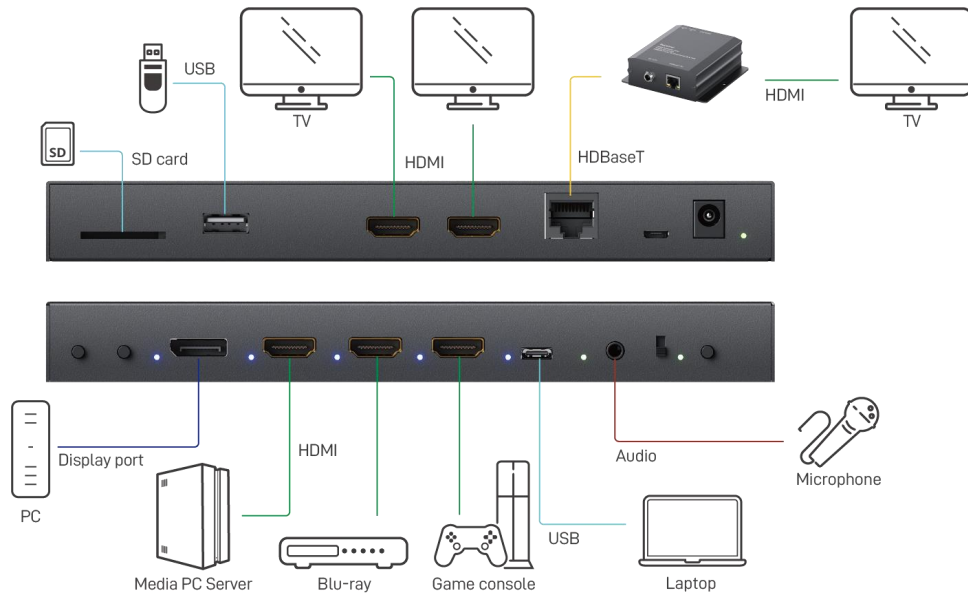
1. **Channel Selected Button:** Switch from the selected input back to the prior input channel
2. **Channel Selected Button:** Switch from the selected input to the next input channel
3. **Selected Source Status LED:** When users use port channel selected button, the indicator LED will show the selected source.
4. **DisplayPort Input:** Connect to a DisplayPort source
5. **HDMI Input 1-3:** Connect to HDMI sources
6. **Type C Input:** Connect to a Type C source¹
7. **Input Signal LED:** When the selected input receives the signal, the LED light will shine
8. **Audio IN:** Connect to analog stereo audio source
9. **Slide Switch:** Select recording storage device
[UP]: USB flash drive
[DOWN]: SD Card
10. **Recorder Status LED:**
[Solid Green]: The device is recording
[Fast Blink]: The device is in the process of saving file
[Slow Blink]: The USB flash drive or SD card is connecting to the product
11. **Recording Button:** Start/Stop recording function
12. **SD Card Port for Recording:** Insert a SD card
13. **USB Port for Recording:** Connect a USB flash drive
14. **HDMI Output 1-2:** Connect to HDMI displays
15. **RJ-45 [HDBaseT output]:** Plug in a Cat-5/5e/6 cable that needs to be linked to the receiving unit
16. **Micro-USB:** for firmware update
17. **+5V DC:** Connect to a 5V DC power supply
18. **Power LED:** Power LED indicator

! 1.Type-C input do NOT support smart phone

Noted:

1. After recording, the device will create files which suffix is .mp4. Each .mp4 file name is saved as record_(serial number), serial number starts from 0, 1, 2, The file name serial number will re-start from 0, 1, 2, after product power cycle.
2. The date and time of all recording files will be saved as 2013/1/1 13:00.
3. The recording function supports storage device(USB flash drive/ SD card) in the FAT32 and NTFS format.
4. The storage space will need about 6GB for recording one hour
5. Press and hold recording button for 3-5 seconds to open/close HDCP mode. On HDCP mode, the device can show the HDCP content video. User can know the device is on HDCP mode or not by seeing the recorder status LED when you power on device.
[HDCP mode ON]: the LED flashes once
[HDCP mode OFF]: the LED flashes twice
6. The device can NOT record the HDCP content video.

CONNECTION DIAGRAM



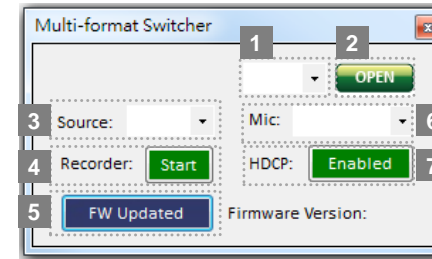
OPERATION APPROACH

Software Control through Micro-USB port

1. System Requirement

- (1) OS information: MS Win XP/7/8/10
- (2) Baud rates: 115200
- (3) Software size: 1MB
- (4) Minimum RAM requirement: 256MB

2. Control Interface



- 1 COM Port Selection
- 2 Connected/disconnected Button
- 3 Input Selection
- 4 Recording Button
- 5 Firmware Updated Button
- 6 Microphone Selection
- 7 HDCP Mode On/Off

(1) COM Port Selection

Please ensure you have secured the connection between your computer COM port and the device. Select correct COM port.

(2) Connected/disconnected Button

Click open/close button to connect/disconnect software

(3) Input Selection

Select input (DisplayPort, HDMI1, HDMI2, HDMI3, Type-C)

(4) Recording Button

Start/Stop recording function

(5) Firmware Updated Button

Before you start to update, please make sure you have secured the connection between your computer COM port and the device.

- Click **FW Updated** button to do firmware update.
- The firmware update window shows up as below.

WARRANTY

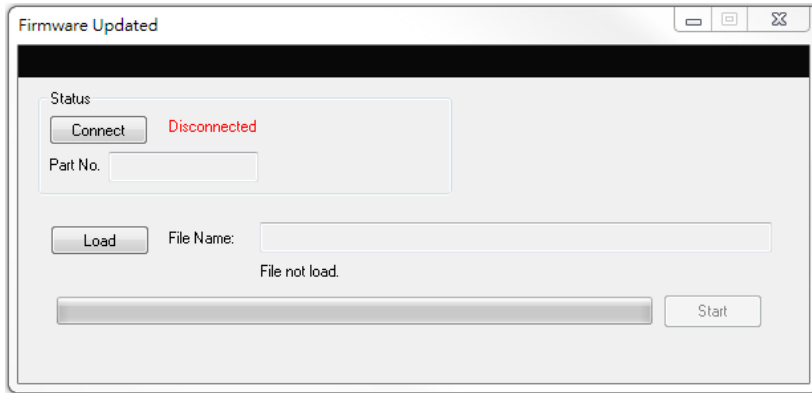
The SELLER warrants the **SW-5054R 5x3 Multi-Format Presentation Switcher with HDMI, HDBaseT-Lite Outputs & Recorder** free from defects in the material and workmanship for 1 year from the date of purchase from the SELLER or an authorized dealer. Should this product fail to be in good working order within 1 year warranty period, The SELLER, at its option, repair or replace the unit, provided that the unit has not been subjected to accident, disaster, abuse or any unauthorized modifications including static discharge and power surge. This warranty is offered by the SELLER for its BUYER with direct transaction only. This warranty is void if the warranty seal on the metal housing is broken.

Unit that fails under conditions other than those covered will be repaired at the current price of parts and labor in effect at the time of repair. Such repairs are warranted for 90 days from the day of reshipment to the BUYER. If the unit is delivered by mail, customers agree to insure the unit or assume the risk of loss or damage in transit. Under no circumstances will a unit be accepted without a return authorization number.

The warranty is in lieu of all other warranties expressed or implied, including without limitations, any other implied warranty or fitness or merchantability for any particular purpose, all of which are expressly disclaimed.

Proof of sale may be required in order to claim warranty. Customers outside Taiwan are responsible for shipping charges to and from the SELLER. Cables and power adapters are limited to a 30 day warranty and must be free from any markings, scratches, and neatly coiled.

The content of this manual has been carefully checked and is believed to be accurate. However, The SELLER assumes no responsibility for any inaccuracies that may be contained in this manual. The SELLER will NOT be liable for direct, indirect, incidental, special, or consequential damages resulting from any defect or omission in this manual, even if advised of the possibility of such damages. **Also, the technical information contained herein regarding the SW-5054R features and specifications is subject to change without further notice.**



- Click button to load firmware file.
- Click button to make sure that device is on connected status
- Click button to start firmware update process.
- After updating, please power cycle the device.

(6) Microphone Selection

Select microphone device (Built-in MIC, External MIC or both)

(7) HDCP Mode On/Off

Enable/Disable HDCP